

**LAC Voting System**

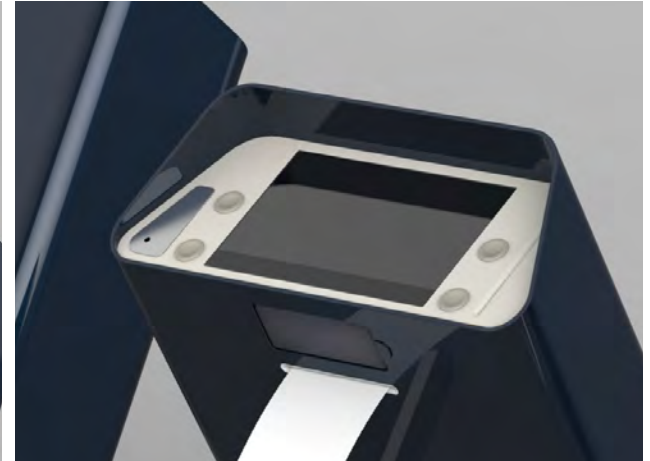
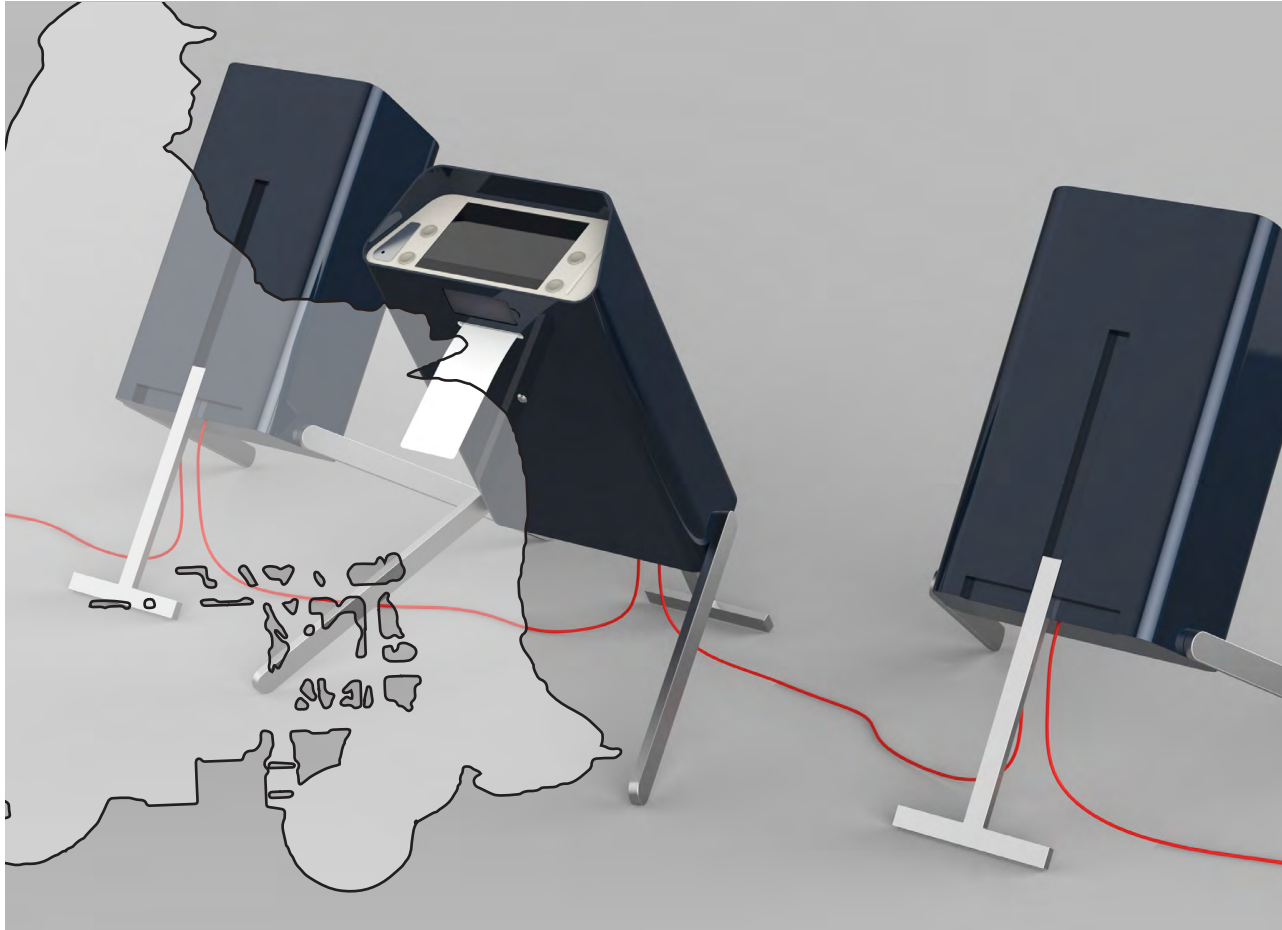
**User Feedback Concepts**

**10/01/13**

# CONCEPT ONE CRICKET

PHASE02  
CONCEPT EVALUATION  
OCTOBER 1, 2013

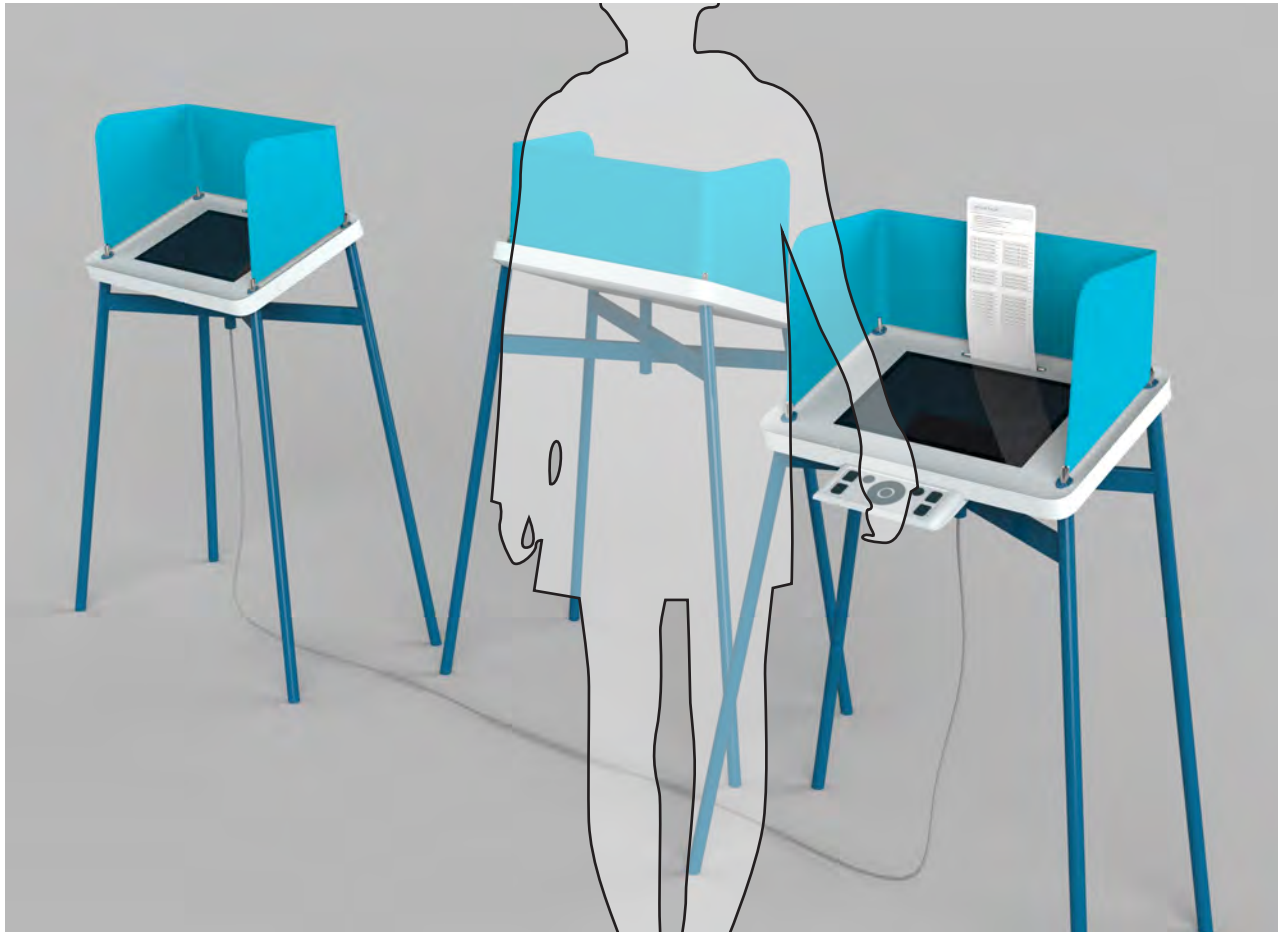
- 1/CHECK-IN WITH A POLL WORKER WHO WILL LOG YOU IN THE VOTING MACHINE
- 2/MARK YOUR BALLOT ON THE TOUCH DISPLAY OR USING HEADSET & REMOTE
- 3/VERIFY YOUR CHOICES ONSCREEN
- 4/PRINT YOUR BALLOT AND VERIFY. START OVER IF INCORRECT
- 5/IF CORRECT, CAST YOUR VOTE IN THE BUILT-IN BALLOT BOX



# CONCEPT TWO TALLBOY

PHASE02  
CONCEPT EVALUATION  
OCTOBER 1, 2013

- 1/CHECK-IN WITH A POLL WORKER WHO WILL HAND YOU OUT A BLANK BALLOT
- 2/INSERT BLAN BALLOT INTO THE VOTING MACHINE
- 3/MARK YOUR BALLOT ON THE TOUCH DISPLAY OR USING HEADSET & REMOTE
- 4/VERIFY YOUR CHOICES ONSC
- 5/PRINT AND VERIFY YOUR BALLOT
- 6/IF CORRECT CAST YOUR VOTE IN THE COMMUNAL BALLOT BOX



# CONCEPT THREE IN-A-BOX

PHASE02  
CONCEPT EVALUATION  
OCTOBER 1, 2013

- 1/CHECK-IN WITH A POLL WORKER WHO WILL LOG YOU IN THE VOTING MACHINE
- 2/MARK YOUR BALLOT ON THE TOUCH DISPLAY OR USING HEADSET & REMOTE
- 3/VERIFY YOUR CHOICES ON SC
- 4/PRINT AND VERIFY YOUR BALLOT (UNDER GLASS)
- 5/CAST YOUR VOTE IN THE BUILT-IN BALLOT BOX OR EJECT THE INCORRECT BALLOT AND START OVER

