



A PHOTO MEMOIR OF THE RECORD SHATTERING

NOVEMBER 2, 2004
PRESIDENTIAL GENERAL ELECTION



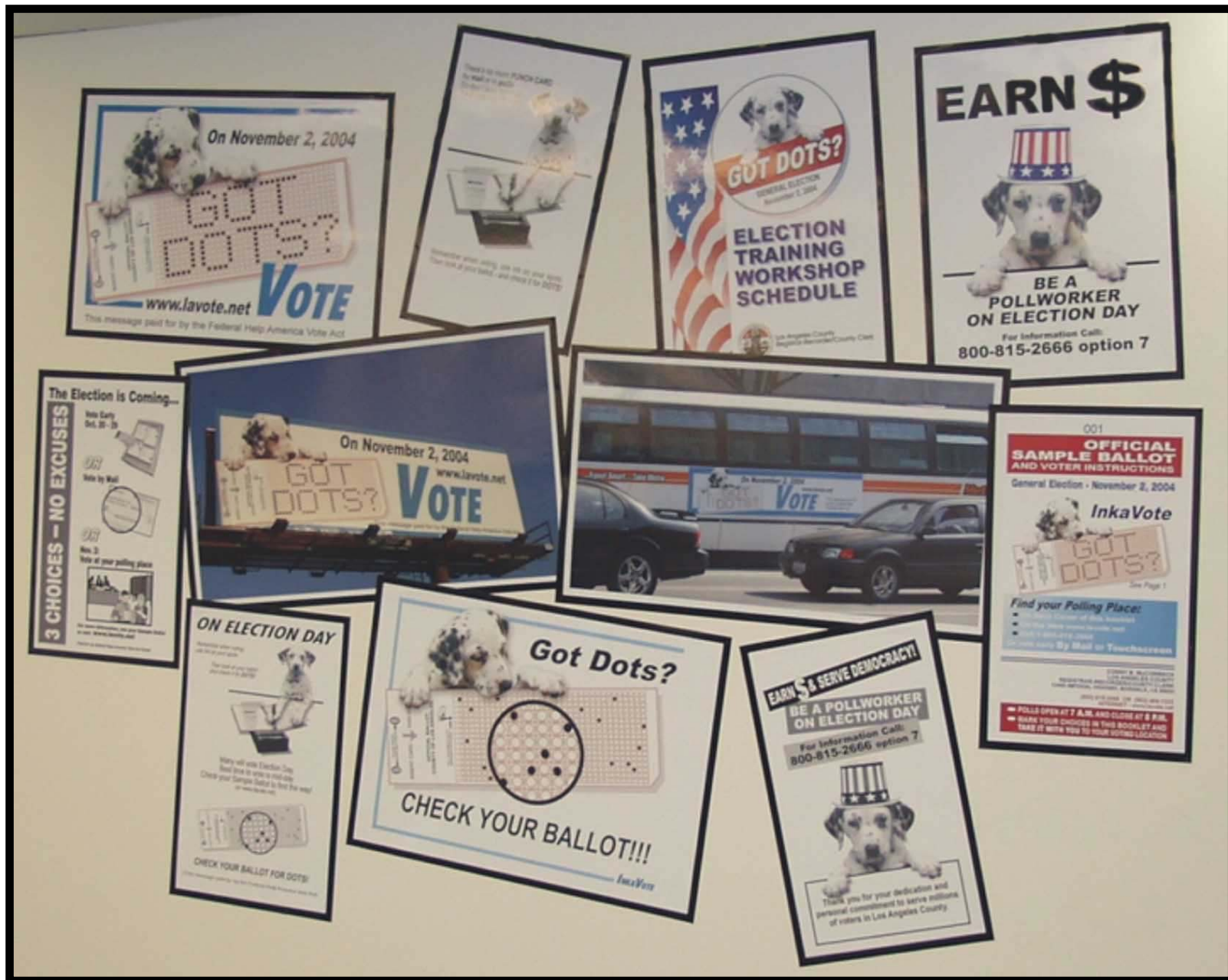
Los Angeles County Registrar-Recorder/County Clerk



Record Shattering Numbers from the November 2, 2004 Presidential General Election

- **Record # of registered voters (4,075,122)**
- **Record # of voter registrations in the last month (446,122)**
- **Record # of absentee ballots mailed (752,217)**
- **Record # of absentee ballots returned & counted (636,028)**
- **Record # of early voters via electronic touchscreen (65,665)**
- **Record # of provisional ballots issued (204,578)**
- **Record # of provisional ballots counted (166,894)**
- **Record voter turnout (3,085,582 = 79.1%*)**
- **Record # of poll workers recruited and trained (30,381)**
 - **4,118 County Poll Workers**
 - **3,120 College Poll Workers**
 - **4,333 High School Poll Workers**
 - **18,810 other**
- **Record # of phone calls answered on election day (90,679)**
- **Record # of website visitors on election day (191,972)**
- **Record # of website hits on election day (5,999,152)**

*** % based on 3,901,106 registered voters (# at time of official report to Secretary of State prior to election day).**



Launched first ever paid multi-media advertising campaign to educate 4 million registered voters on new InkaVote voting system. \$1.3 million of federal Help America Vote Act (HAVA) funds was spent on a "Got Dots?" campaign featuring a Dalmatian puppy. Ads ran in 17 newspapers, 16 radio and 4 cable TV channels. Freeway billboards and bus signs rounded out the campaign.

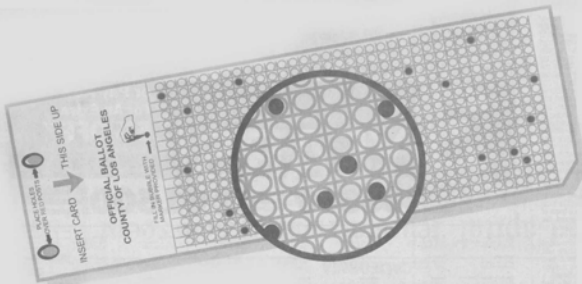
ON ELECTION DAY

Remember when voting,
use ink on your spots.

Then look at your ballot -
and check it for **DOTS!**



Many will vote Election Day,
Best time to vote is mid-day
Check your Sample Ballot to find the way!
(or www.lavote.net)



CHECK YOUR BALLOT FOR DOTS!

(This message paid for by the Federal Help America Vote Act)

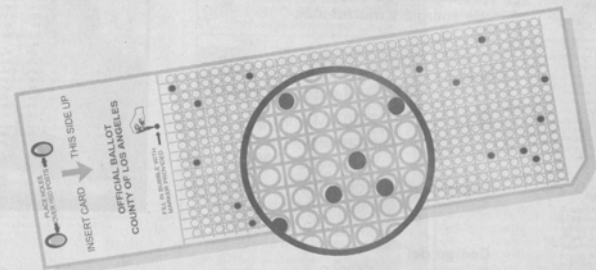
EL DIA DE LA ELECCION

Al votar recuerde marcar
con tinta los circulos.

luego mire la boleta
¡para verificar que tenga **PUNTOS!**



Mucha gente va a votar el Día de la Elección
La mejor hora para votar es a mediodía
¡Mire su Boleta de Muestra para ver dónde tiene que ir!
(ó www.lavote.net)



¡CONFIRME QUE SU BOLETA TENGA PUNTOS!

(Este mensaje está pagado por Federal Help America Vote Act)

HAVA-funded multi-media, multi-lingual advertising campaign focused on key message: educating voters on how to use new InkaVote system and reminding voters to check their ballots after voting.

The Election is Coming...

3 CHOICES – NO EXCUSES

**Vote Early
Oct. 20 - 29**



OR

Vote by Mail



OR

**Nov. 2:
Vote at your polling place**



**For more information, see your Sample Ballot
or visit www.lavote.net**

Paid for by federal Help America Vote Act funds

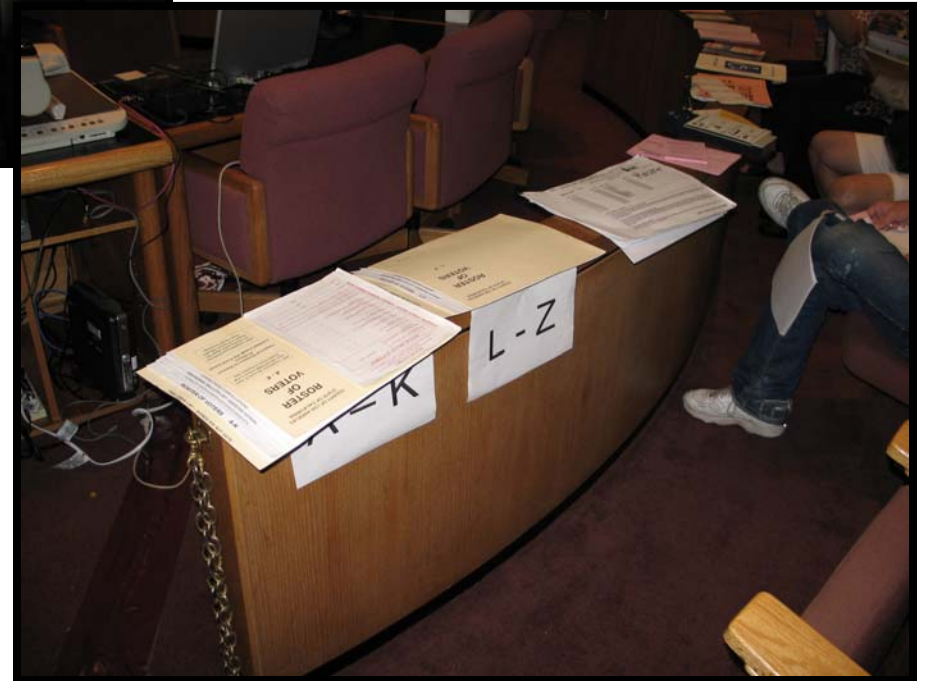
**A record
breaking
3,085,582
voted! This
included 65,665
via touchscreen
early voting,
636,028 by
absentee mail
and 2,383,889
at their polling
places on
election day.**



**Staff at the
Service
Center
prepared
32,909 vote
recorders for
the polling
places along
with 4,604
supply tubs.**



**30,381
poll workers
were trained
throughout
the County
prior to the
November
election.**





636,028 voters chose to vote absentee by mail. Each absentee application must be entered into the database and then filed (partial number of applications pictured).



Absentee Voting Section Head Steve Logan (far left) and RR/CC Conny McCormack (middle) with several permanent and temporary absentee voting staff.



**65,665 voters
voted early on
Touchscreen
electronic voting
equipment at
17 locations
countywide.**

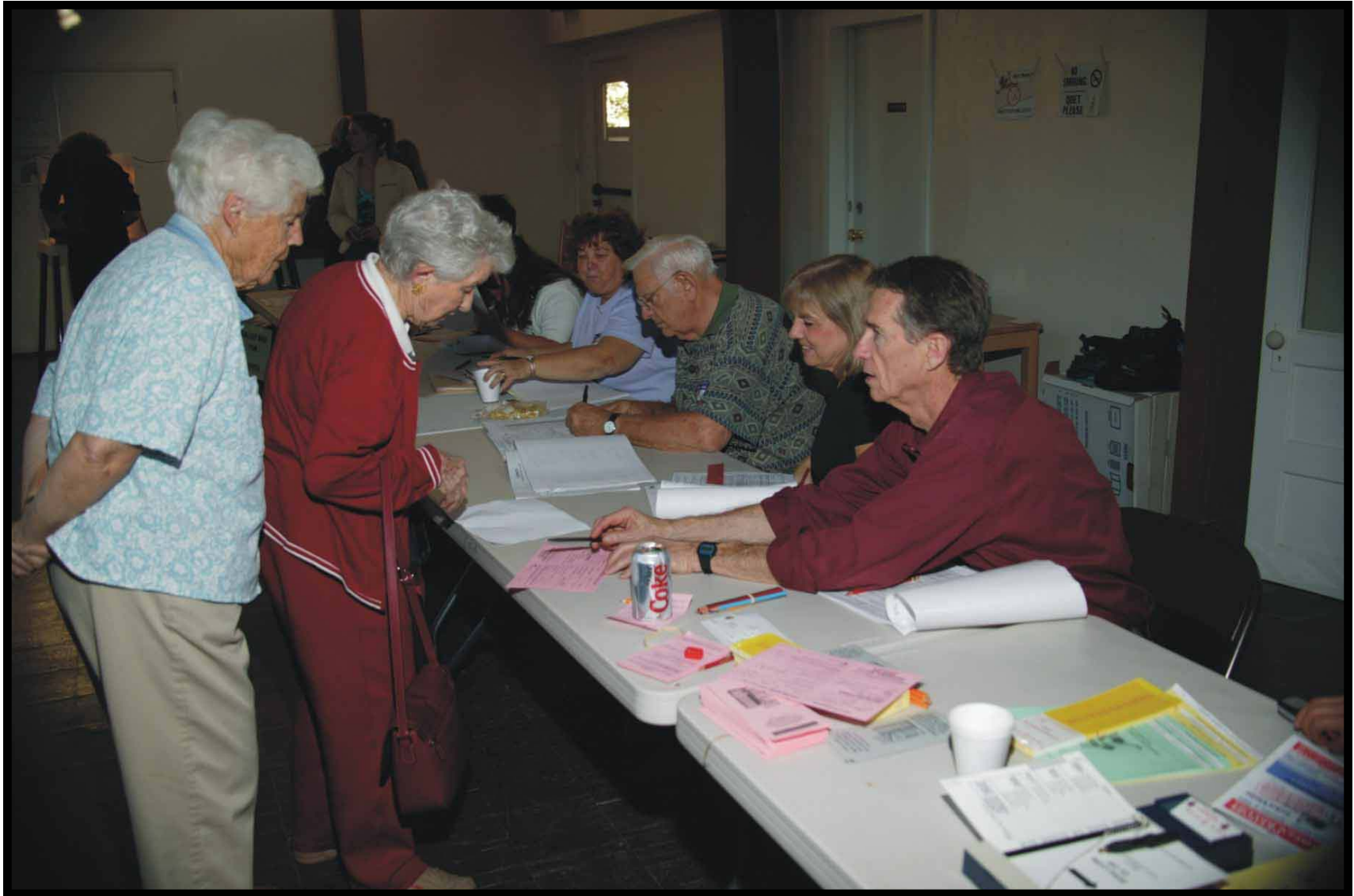




An Election Day record breaking number of website hits (5,999,152) and number of phone calls answered (90,679). Poll Worker Services Division Manager, Martin McDonald pictured in-front on phone amid Polls staff responsible for recruiting poll workers.



First District Supervisor Gloria Molina (middle) and staff working as poll workers on Election Day at Aldama Elementary School in L.A. pictured with InkaVote “spokesdog” Dots. This was Molina’s 3rd time serving the voters as a poll worker.



204,578 voters cast a provisional ballot. After researching eligibility, 166,894 (82%) of the provisional ballots were counted. David Janssen, L.A. County CAO (far right assisting a voter with a provisional ballot) joined 4,118 County employees working at the polls.



**On Election night
hundreds of High School
student volunteers helped
transport voted ballots
and supplies within the
Norwalk Headquarters.**



High School volunteers assist in processing voted ballots at Norwalk Headquarters.



Each red box contains voted ballots from one of the 4,604 voting precincts.



High School volunteers remove voted ballots from red boxes and inspect ballots prior to tabulation.

**Elections staff
worked until
all 4,604
precincts' red
boxes were in
Norwalk!**





**Helicopters
and sheriff
vehicles
delivering
ballots to
Norwalk
Headquarters
for tabulation.**



30,381 volunteers worked at 4,604 polling locations. Here's one precinct coordinator returning election supplies to Norwalk Headquarters.



Media flooded the building and even camped out election night!





Technical staff run 3 million ballots through high speed card readers in 5 hours on election night at Norwalk Headquarters.





Russian election observers watch ballot counting election night at Norwalk Headquarters.

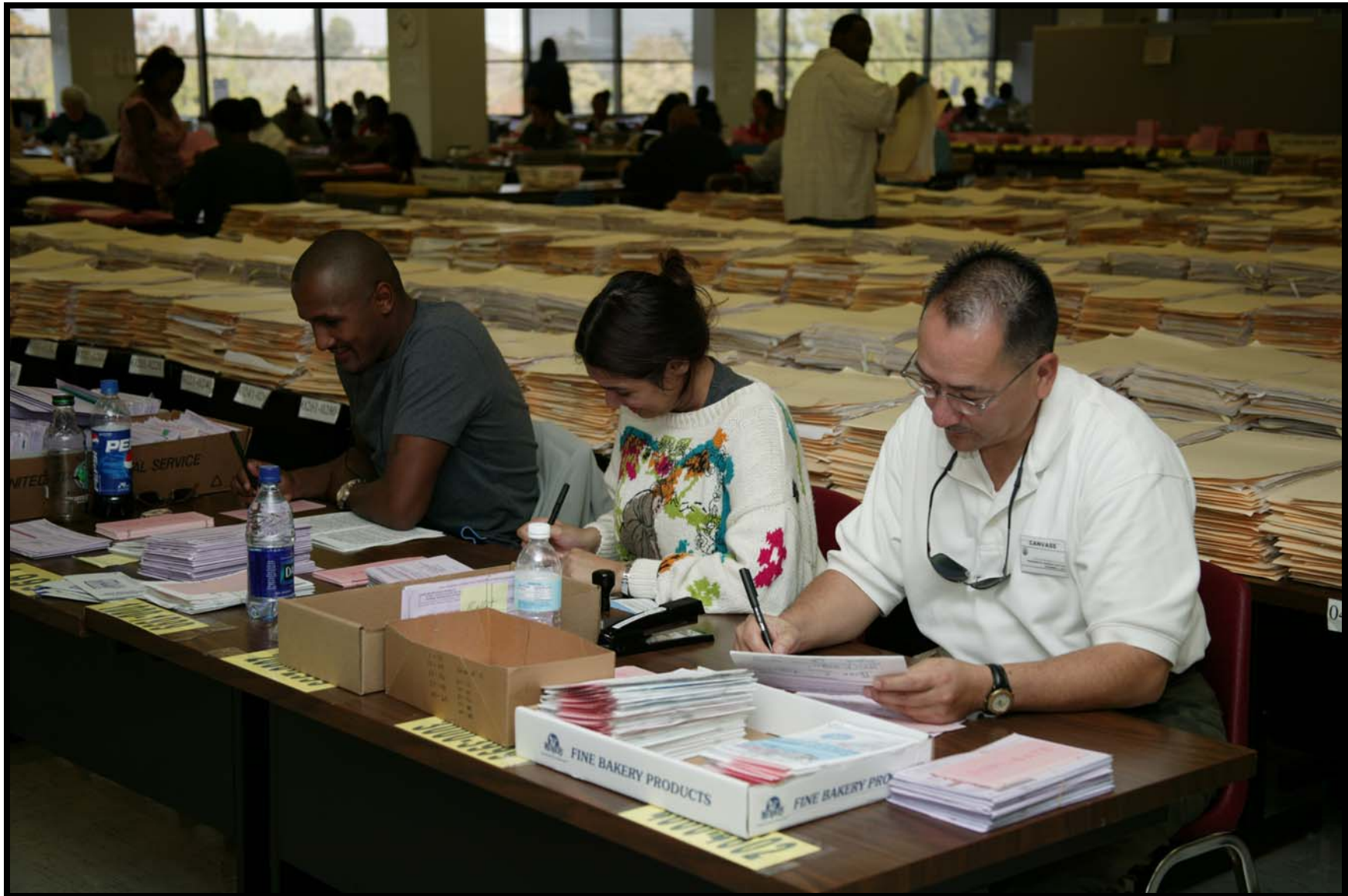


A “sea of pink!” - A record high 204,578 provisional ballots in pink envelopes, were processed for this election!



Each provisional ballot must go through a research and signature verification process before counted.

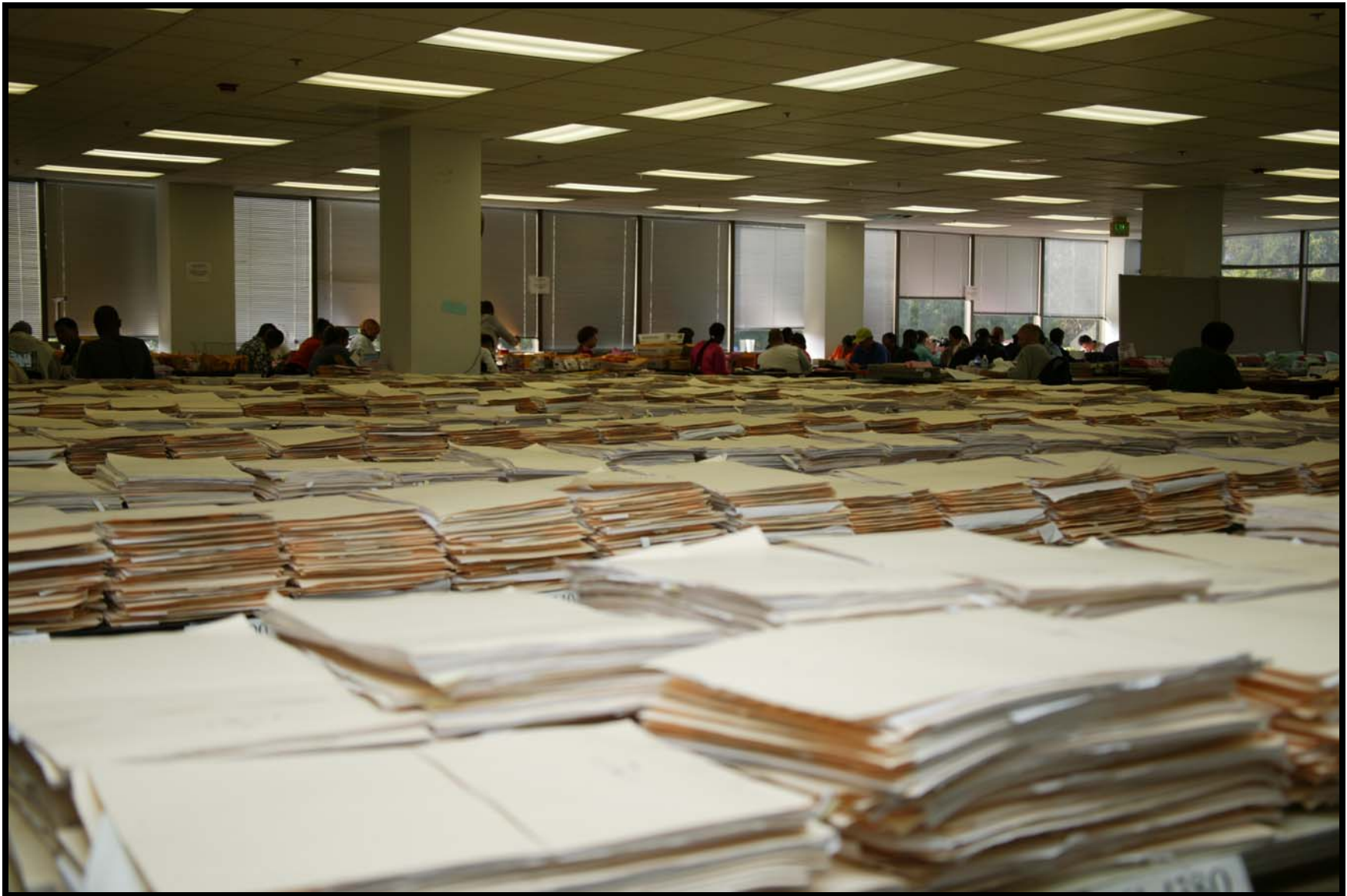




Post-election processing/audit, called the “canvass”, takes place for 28 days after the election prior to official certification of results. Here elections staff re-make damaged ballots. Rosters of voters from 4,604 precincts fill the tables.



During the canvass, 4,604 precincts' supply boxes must be de-processed.



A “sea of yellow”- 4,604 precincts’ voter rosters containing names of 5.5 million active and inactive voters piled on tables. Staff diligently reconcile the number of voters who signed in compared with the number of ballots issued as required during vote canvass operations.



November 3, 2004 Board of Supervisors honor VIP election observers from Russia, Nigeria and Washington D.C. L to R: Supervisor Mike Antonovich, RR/CC Conny McCormack, Supervisor and Board Chairman Don Knabe, Chairman of Russian Central Election Commission Alexander Veshnyakov, IFES translator Irina Zaslavkaya, Nigerian Election Commissioner Adeline Idike, Supervisor Gloria Molina, U.S. Election Assistance Commissioner Gracia Hillman, Supervisor Yvonne B. Burke, Supervisor Zev Yaroslavky.



VIP International election observers: from L to R Nigeria, England, Russia, Belarus and Holland, along with Vice Chair of U.S. Election Assistance Commission Gracia Hillman and Mayor of City of Whittier Owen Newcomer joined by RR/CC Conny McCormack at McCormack's home for an election celebration.

VOTE: Record for absentees

CONTINUED FROM A1

her name, address or political party, officials said.

"We could well hit 4 million," said Conny McCormack, Los Angeles County registrar-recorder.

A recent number of absentee ballot applications, reported at \$53,000 on Oct. 13, rises just from 49,000 at this time in 2000. And about 15,000 to 25,000 applications have been flowing into the office daily, almost double the number received in 2000.

McCormack referred to the crowd Monday as a "mob scene." People returned the tables near the entry where registration forms were handed out. And at noon, people filled all available seats as they waited their turn to cast an early ballot electronically.

"We're certainly seeing a steady stream of people coming in, which is unusual on the registration deadline," McCormack said. "It's much busier this year than we've used to in person."

However, McCormack added that it's hard to compare this year's numbers to previous years since voters can now register up to 15 days before the election. In 2000, registration closed two weeks earlier.

Sanchez said the presidential race has been a popular conversation topic among friends, and though she preferred not to say who she would vote for, she did say her mind is set.

Many voters, including 25-year-old Kelly Laguna, said people seem more involved in this race than they've been in past elections. "This is a real high-profile election," Laguna said.

In fact, she said, she wants to get a certain amount of candidates in office drove her to register. "I'm not sure if I'm more involved in this race than they've been in past elections. This is a real high-profile election," Laguna said.

"I feel better if I vote," he said as he did just that — electronically. People from Mexico, they care. They care a lot."

All applications received or posted to the county website by 5 p.m. on Oct. 13 will be processed. Applications received after that time will be processed on Oct. 14.

Registrations to Vote Surge at Record Rate

More than 1.8 million have been added to the state rolls this year, pushing the total close to 16 million. Many are under 29 years old.

By DOVO SMITH
Times Staff Writer

California registered to vote in record numbers this election year, despite the lack of suspense over who will win the state's 55 electoral votes Tuesday.

Though the national parties and interest groups focused their voter drives elsewhere, registrations in the heavily Democratic state surged anyway, spurred by Internet-based campaigns and interest in the presidential race and an array of state propositions.

More than 1.8 million Californians registered in the first eight months of 2004, nearly twice the number from the same period in 2000, a Times analysis of registration data collected by the secretary of state shows.

"My guess is this year it'll be close to 16 million," said Bob Mulholland, political director of the California Democratic Party. Total registrations peaked at 15.7 million during the last presidential campaign.

Mirroring a national trend, the new registrations were weighted toward the young, and an increasing number of those who signed up this year declined to state a party affiliation.

Nearly 23% of this year's registrants gave no party designation, up 5 percentage points from 2000.

Though it was impossible to determine from state records how many of the registrations represented first-time voters, more than 36% were under 29 years old — a third higher than four years ago.

The newly released figures include registrations only through August, the last time before the election that all counties were required to forward their voter

registrations to the state registrar-recorder. In 2000, only 1.3 million registrations were not finished processing at the deadline.

The pull of the presidential contest has helped the Democratic Party register more voters during last year's runoff election in which Arnold Schwarzenegger unseated the widely unpopular Democratic Gov. Gray Davis.

Two months before Tuesday's election, Republicans made up 35% of the electorate almost exactly the same level as in 2000. Democrats were at 42% and those declining to state, 17%.

Karen Hanretty, communications director for the Republican Party, said she has conducted an registration drive since the summer of 2003, when the campaign was in full swing. "We started to see a significant increase after Gov. Davis signed the car tax," she said. "During the recall, we worked to gain momentum. Ordinarily, a presidential year, citizens more tuned to politics."

That momentum has sided this year, however. Republicans accounted only 28% of all registrations the first months of 2004, compared with 42% for Democrats. Mulholland, the Democratic political director, said the increasing reluctance to state a party follows national trends.

"The natural trend in California is less identity with organizations, and political parties among them," he said. "Young people did not grow up in a political party atmosphere."

Many young Californians have been drawn into the electoral process by national campaigns targeting their age group. MTV's Rock the Vote campaign pulled in nearly 150,000 line registrations in the state, about 10% of its national total, said spokesman Jay Strell.

The California Public Interest Research Group and a coalition

of volunteers, including 25-year-old Kelly Laguna, said people seem more involved in this race than they've been in past elections. "This is a real high-profile election," Laguna said.

In fact, she said, she wants to get a certain amount of candidates in office drove her to register. "I'm not sure if I'm more involved in this race than they've been in past elections. This is a real high-profile election," Laguna said.

"I feel better if I vote," he said as he did just that — electronically. People from Mexico, they care. They care a lot."

All applications received or posted to the county website by 5 p.m. on Oct. 13 will be processed. Applications received after that time will be processed on Oct. 14.

The pull of the presidential contest has helped the Democratic Party register more voters during last year's runoff election in which Arnold Schwarzenegger unseated the widely unpopular Democratic Gov. Gray Davis.

Two months before Tuesday's election, Republicans made up 35% of the electorate almost exactly the same level as in 2000. Democrats were at 42% and those declining to state, 17%.

Karen Hanretty, communications director for the Republican Party, said she has conducted an registration drive since the summer of 2003, when the campaign was in full swing.

That momentum has sided this year, however. Republicans accounted only 28% of all registrations the first months of 2004, compared with 42% for Democrats.

Mulholland, the Democratic political director, said the increasing reluctance to state a party follows national trends.

"The natural trend in California is less identity with organizations, and political parties among them," he said. "Young people did not grow up in a political party atmosphere."

Many young Californians have been drawn into the electoral process by national campaigns targeting their age group. MTV's Rock the Vote campaign pulled in nearly 150,000 line registrations in the state, about 10% of its national total, said spokesman Jay Strell.

The California Public Interest Research Group and a coalition

of volunteers, including 25-year-old Kelly Laguna, said people seem more involved in this race than they've been in past elections. "This is a real high-profile election," Laguna said.

In fact, she said, she wants to get a certain amount of candidates in office drove her to register. "I'm not sure if I'm more involved in this race than they've been in past elections. This is a real high-profile election," Laguna said.

"I feel better if I vote," he said as he did just that — electronically. People from Mexico, they care. They care a lot."

All applications received or posted to the county website by 5 p.m. on Oct. 13 will be processed. Applications received after that time will be processed on Oct. 14.

He cited a published report saying the top general in his had warned Pentagon officials to write about a shortage of supplies.

If anything, Democratic running mate John Edwards was harsher. Bush is trying to con the American people into believing that he is the

commander. He cited a published report saying the top general in his had warned Pentagon officials to write about a shortage of supplies.

If anything, Democratic running mate John Edwards was harsher. Bush is trying to con the American people into believing that he is the

commander. He cited a published report saying the top general in his had warned Pentagon officials to write about a shortage of supplies.

If anything, Democratic running mate John Edwards was harsher. Bush is trying to con the American people into believing that he is the

commander. He cited a published report saying the top general in his had warned Pentagon officials to write about a shortage of supplies.

If anything, Democratic running mate John Edwards was harsher. Bush is trying to con the American people into believing that he is the

commander. He cited a published report saying the top general in his had warned Pentagon officials to write about a shortage of supplies.

If anything, Democratic running mate John Edwards was harsher. Bush is trying to con the American people into believing that he is the

commander. He cited a published report saying the top general in his had warned Pentagon officials to write about a shortage of supplies.

If anything, Democratic running mate John Edwards was harsher. Bush is trying to con the American people into believing that he is the

commander. He cited a published report saying the top general in his had warned Pentagon officials to write about a shortage of supplies.

If anything, Democratic running mate John Edwards was harsher. Bush is trying to con the American people into believing that he is the

commander. He cited a published report saying the top general in his had warned Pentagon officials to write about a shortage of supplies.

If anything, Democratic running mate John Edwards was harsher. Bush is trying to con the American people into believing that he is the



Carol King of Lakewood sealed fills out a voter registration form at the Los Angeles Registrar-Recorder office in Norwalk on Monday, deadline day. Carl Hedega / AP

Registrar-recorder expecting record turnout Nov.

Nearly 68 percent of the county's roughly 5.6 million eligible voters have registered for Nov. 2 election.

Christopher Hanson

Los Angeles County Registrar-Recorder Conny McCormack said the county's registration drive since the summer of 2003, when the campaign was in full swing, has resulted in a record turnout for the Nov. 2 election.

McCormack said the county's registration drive since the summer of 2003, when the campaign was in full swing, has resulted in a record turnout for the Nov. 2 election.

McCormack said the county's registration drive since the summer of 2003, when the campaign was in full swing, has resulted in a record turnout for the Nov. 2 election.

polling sites and processed a record 700,000-plus absentee voter applications in anticipation of the Nov. 2 General Election.

"We've been working double shifts for at least the past three weeks, getting everything ready for what we expect to be a very large turnout," said Los Angeles County Registrar-Recorder Conny McCormack. "The (logistics) of preparing a county this size for a major election are unbelievable. Just on Wednesday, we received 53,304 voter registration forms in the mail that we have to process."

On the night of Nov. 2 alone, they expect to count more than 2 million ballots.

Nearly 68 percent of the county's roughly 5.6 million eligible voters have registered.



'We'll get every vote counted, either on election night or in the (28) days that follow. No one will be disenfranchised.'

County Registrar-Recorder Conny McCormack

Officials expect turnout this year to be even higher than the 68 percent of registered voters who cast ballots in the 2000 presidential election.

Election workers are also busy educating voters on an optical scan ballot adopted this year to replace the old punch-card ballots. The InkaVote system will be used countywide for only the second time on Election Day.

The ink-on-paper ballot sys-

tem was first used in the March primary, but many residents only vote in general elections and remain unfamiliar with the new system, which has required the county to step up efforts to raise awareness.

InkaVote is similar in appearance to punch cards, but voters will use a marker rather than the dull-tip needles voters previously used to mark their choices.

For those who registered to

vote before Oct. 1, sample ballots have been mailed. Voters who registered closer to the Oct. 18 deadline may not receive a sample ballot in the mail because of time constraints.

Registered voters whose names don't show up at their polling places will still be able to cast a provisional ballot, which will be counted after their information is compared against their registration.

That usually happens by Thanksgiving, McCormack said.

"We'll get every vote counted, either on election night or in the (28) days that follow," she said. "No one will be disenfranchised."

Kristopher Hanson can be reached at (562) 499-1337.

Election Managers



Los Angeles County REGISTRAR-RECORDER / COUNTY CLERK ORGANIZATION CHART - 2004

